

Schedule 3

Item 1 Description of Agreement Area

A. External boundary description

The area subject to this agreement covers all land and waters subject to the following part lots that fall within the boundary of Native Title Determination Application QUD6162/1998 Iman People #2 (QC1997/055) as accepted for registration on 18 August 2014:

- Those parts of:

Lot E on Plan SP171813, Lot 745 on Plan PH619 (Coorada) and Lot A on Plan CP851093 south of a line extending between the following coordinate points:

Longitude ° East	Latitude ° South
149.068394	24.998419
149.937082	24.998415

Note

Data Reference and source

- Agreement boundary compiled by National Native Title Tribunal based on information or instructions provided by the applicants.
- Cadastre data sourced from department of Natural Resources and Mines, Qld (February, 2015).

Reference datum

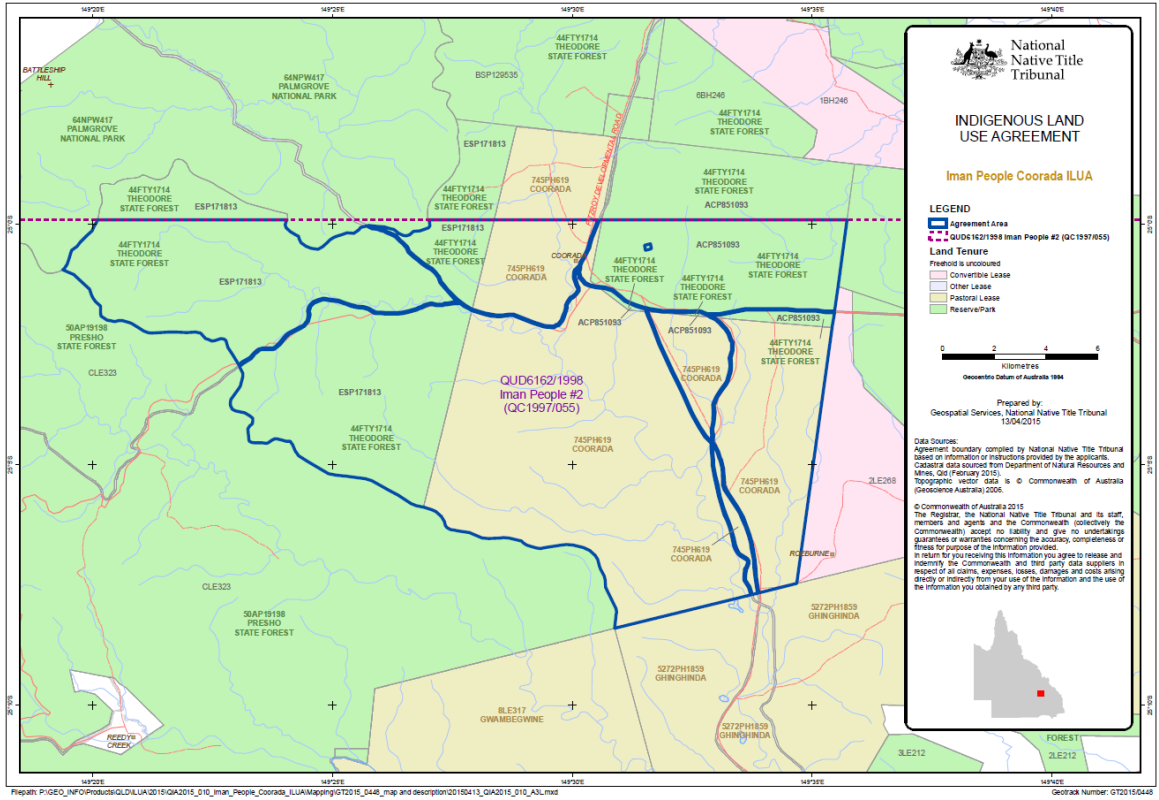
Geographical coordinates have been provided by the NNTT Geospatial Services and are referenced to the Geocentric Datum of Australia 1994 (GDA94), in decimal degrees and are based on the spatial reference data acquired from the various custodians at the time

Use of Coordinates

Where coordinates are used within the description to represent cadastral or topographical boundaries or the intersection with such, they are intended as a guide only. As an outcome to the custodians of cadastral and topographic data continuously recalculating the geographic position of their data based on improved survey and data maintenance procedures, it is not possible to accurately define such a position other than by detailed ground survey.

Prepared by Geospatial Services, National Native Title Tribunal (13 April 2015).

B. Map



Item 2 Description of Lease

Lot 745 on PH619
 Lot A on CP851093
 Lot E on SP171813

Item 3 Description of Lessee

Eion Evan Atkins